



SENSE OF PLACE

Susan Rostow

SENSE OF PLACE

Susan Rostow

Solo Exhibition

Atlantic Gallery
New York, New York
January 3 through January 22, 2022

Copyright 2021 © Susan Rostow
New York, New York
All rights reserved

Thanks to Carole d'Inverno, Ety Yaniv and Martha Jasopersaud

FORWARD

Susan Rostow's sculptures resemble archeological artifacts with biomorphic traits, prompting us to probe into their origin and meaning. Peppered throughout the gallery space, the visceral and mysterious smaller scale sculptures titled Naiads, allude to the nymphs from Greek mythology who protect and reside over rivers and marshes. In the background along the walls these hybrid creatures form a comical procession. Going about their business, each projects a distinct gesture—a bulbous loner in orange hues by a tall pale figure with a protruding belly, a pair pausing to engage in a vivid conversation or perhaps an argument. In the front, duos or extended groups of mixed-scale sculptures hint at Rostow's background as a prolific book artist. Here the sculptures reference spliced or carved book spines in myriad playful ways. They metamorphize into volumes of organic forms resembling abstracted human figures, imaginary animals, or both—all painted with rich colors ranging from earth tones to reds and vibrant yellows to algae greens—evoking natural matter.

Another clue to the artist's environmental concerns is evident in the very process of making these sculptures—Rostow begins with collecting organic and man-made discarded objects along the New York City shorelines. Plants, soil, clay, sand, shells, and discarded plastics pile in her studio alongside series of prints representing aged maps of islands,

underwater landscape, shorelines, and marshes, based on antique maps she researched during her residency at the New-York Historical Society. In her sculptures she combines these fragmented prints with meticulous fabrications of found natural forms or at times actual found matter like shells and soil. In a labor-intensive process she constructs layers upon layers of paper prints embedded and encrusted with years of applied pigments and sand.

This amalgam of process-based layers brings forth a condensed sense of place and time. Textures of abrasive material such as clay and moss-like surface fuse with graphic symbols such as linear markings of shore tides and other signifiers from old maps—into hybrid forms where the lines between past and future, or what is natural and what is fabricated, are seamlessly blurred. Each sculpture becomes a capsule of time-space, and together the grouping forms an ecosystem where parts connect on multiple levels guided by free associations.

Etty Yaniv, Founder of Art Spiel
www.artspiel.org





ACONS, 2021, Mixed media paper sculpture, screen print, pigment, crushed glass, and sand, 17 x 12 x 10 inches.



MAGNIFIED, 2019, Mixed media paper sculpture, carborundum monoprints, magnifying lens, pigment, shells, crushed glass, and sand, 10 x 17 x 14 inches



UNDER WATER, 2021, Mixed media paper sculpture, screen print, pigment, shells, crushed glass, and sand 13 x 21 x 14 inches



FLOATING, 2021, Mixed media paper sculpture, screen print, pigment, shells, crushed glass, and sand, 12 x 17 x 7 inches.



MOLTANTING, 2021, Mixed media sculpture, screen print, paper, pigment, plastic, crushed glass, and sand, 23 X 10 X 10 inches and 5- and 6-inch-tall naiads.



STANDING OLD, 2021, Mixed media paper sculpture, screen print, pigment, crushed glass, and sand, 17 x 22 x 12 inches and 4-inch Naiad.



BONE LEGS, view one, 2021
(completed), Mixed media sculptural
book with carborundum prints on
paper, preserved fungi, wood, plastic,
parabolic mirror, sand, ground glass,
and pigments. 24 x 20 x 20 inches.
(left)



BONE LEGS, view two (right)

PARABOLOIDAL, Mixed media with
carborundum prints on paper, wood,
plastic, parabolic mirror, sand, ground
glass, 16 x 9 x 8 inches. (right)

PARABOLOIDAL, detail. (left)





LUNATE, view one, 2020, Mixed media sculpture, screen print, collagraph, monoprint, paper, pigment, and sand, preserved fungi, 15" x 15" x 13" (right)

BONE LEGS, view two (left)



TUBER, 2021, Mixed media sculptural book with carborundum prints on paper, wood, plastic, sand, ground glass, and pigments. 14 x 17 x 15 inches.

TUBER, 2021, (detail)



MINERVA, view one, 2021,
Mixed media sculptural book with
carborundum prints on paper, wood,
plastic, bone, sand, ground glass, and
pigments, 22 x 15 15 inches. (left)

MINERVA, view two, (right)



FOLLOWING SPIRITS



NAIADS 0001, 2021, Mixed media sculptures created from linocut prints on paper. Sizes vary from 2 to 8 inches tall.



NAIADS 0002, 2021, Mixed media sculptures created from linocut prints on paper, 9 inches tall.



NAIADS 0003, 2021, Mixed media sculptures created from linocut prints on paper. Sizes vary from 10.5 to 3.5 inches tall.



NAIADS 0004, 2021, Mixed media sculptures created from linocut prints on paper. Sizes vary from 16 to 4 inches tall.



NAIADS 0005, 2021, Mixed media sculptures created from linocut prints on paper. Sizes vary from 8 to 4 inches tall.



NAIADS 0006, 2021, Mixed media sculptures created from linocut prints on paper. Sizes vary 5 inches tall.



NAIADS 0007, 2021, Mixed media sculptures created from linocut prints on paper. Sizes vary from 6 to 8 inches tall.



NAIADS 0008, 2021, Mixed media sculptures created from linocut prints on paper. Sizes vary from 11 to 4 inches tall.



NAIADS 0009, 2021, Mixed media sculptures created from linocut prints on paper. Sizes vary from 9 to 3 inches tall.



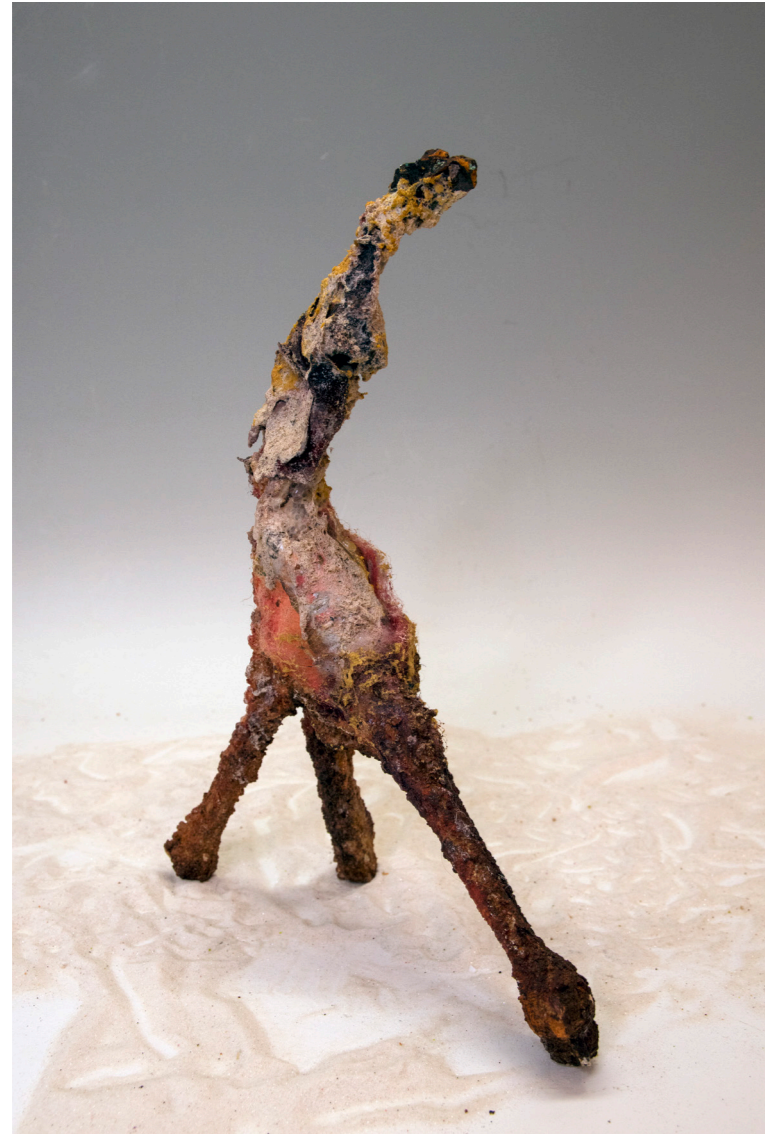
NAIADS 0010, 2021, Mixed media sculptures created from linocut prints on paper. Sizes vary from 10 to 6 inches tall.



NAIADS 0012, 2021, Mixed media sculptures created from linocut prints on paper, 12 inches tall.



NAIADS 0013, 2021, Mixed media sculptures created from linocut prints on paper, 8 and 14 inches tall.



NAIADS 0014, 2021, Mixed media sculptures created from linocut prints on paper, 15 inches tall.



NAIADS 0015, 2021, Mixed media sculptures created from linocut prints on paper, 16 inches tall.



NAIADS 0016, 2021, Mixed media sculptures created from linocut prints on paper, 16 and 3 inches tall.



NAIADS 0017, 2021, Mixed media sculptures created from linocut prints on paper, 13 inches tall.



NAIADS 0018, 2021, Mixed media sculptures created from linocut prints on paper, 13 inches tall.



NAIADS 0019, 2021, Mixed media sculptures created from linocut prints on paper, 16 inches tall.



NAIADS 0020, 2021, Mixed media sculptures created from linocut prints on paper, 13 and 10 inches tall.



NAIADS 0021, 2021, Mixed media sculptures created from linocut prints on paper, 13 inches tall.



MAPPING BONES



FUNGI ON THE WALL 0001, 2019, Wall relief, mixed media, carborundum prints, paper, wood, pigments, sand, crushed glass, preserved fungi, 10 x 8 x 4 inches



FUNGI ON THE WALL 0002, 2019, Wall relief, mixed media, carborundum prints, paper, pigments, and sand, 9 x 7 x 3 inches



FUNGI ON THE WALL 0003, 2019, Wall relief, mixed media, carborundum prints, paper, wood, pigments, sand, crushed glass, preserved fungi, 10 x 8 x 4 inches



FUNGI ON THE WALL 0004, 2019, Wall relief, mixed media, carborundum prints, paper, wood, pigments, sand, crushed glass, preserved fungi, 9 x 11 x 4 inches



CHANGING LANDFORMS, 2021, Wall relief, paper, mixed media plastic and screen prints, 11 x 11 x 3 inches



BREAKING AWAY, 2021, Wall Relief, Paper, mixed media, plastic, and screen prints, 13 x 9 x 4 inches,



FRAGMENTS, Wall relief, paper, mixed media, plastic, and linocut print, 8 x 10 x 3 inches



DIVIDING ISLANDS, 2020, Wall relief, paper, mixed media, preserved fungi, and linocut prints, 14 x 10 x 5 inches.



REACHING, 2020, Wall relief, mixed media, screen print, paper, pigments, sand, sand, preserved fungi, 7 x 7 x 7 inches



CHARED 0010, 2019, Wall relief, mixed media, carborundum prints, paper, wood, and pigments.



CHARED 0011, 2019, Wall relief, mixed media, carborundum prints, paper, wood, and pigments.



CHARED 0012, 2019, Wall relief, mixed media, carborundum prints, paper, wood, and pigments.



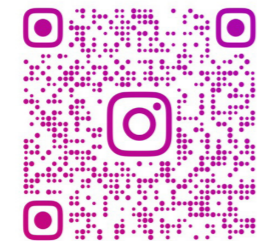
ARTIST BIO

Susan Rostow is a Brooklyn-based multi-media artist. Her sculptural works remind us how to dream and reimagine our world: past, present, and future. Her recent work has been influenced by her Research Residencies at the New York Academy of Medicine and the New York Historical Society, a collaborative project with CENTRAL BOOKING. Her work has earned a New York Foundation for the Arts Fellowship, and a Pollock Krasner Foundation Grant. Susan's work has been exhibited throughout the United States, Europe, Peru, Korea, and Japan. Her work is in public and private collections including the Allan Chasanoff Bookwork Collection, Yale University Art Gallery and the Library of Congress, National Print Archives.

For more info:

www.susanrostow.com

Instagram: @susanrostow



SUSANROSTOW

